

Erdgeschoss 1:100

Projektname für Ausführungsplan

Duspiwa EFH

Projektname für Ausführungsplan

#Layoutname

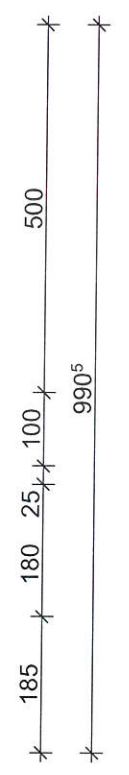
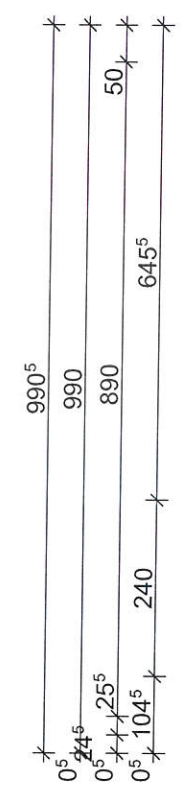
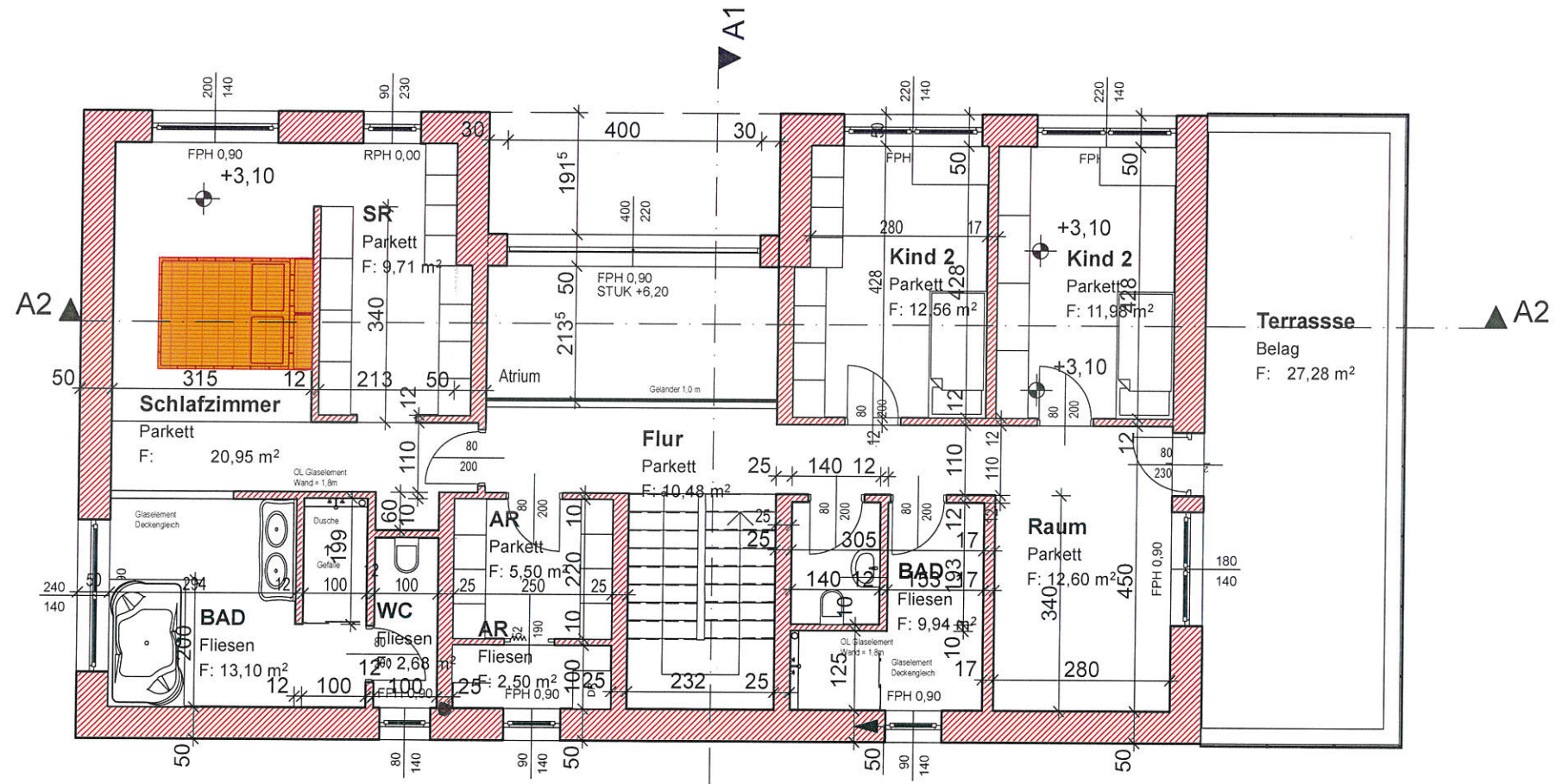
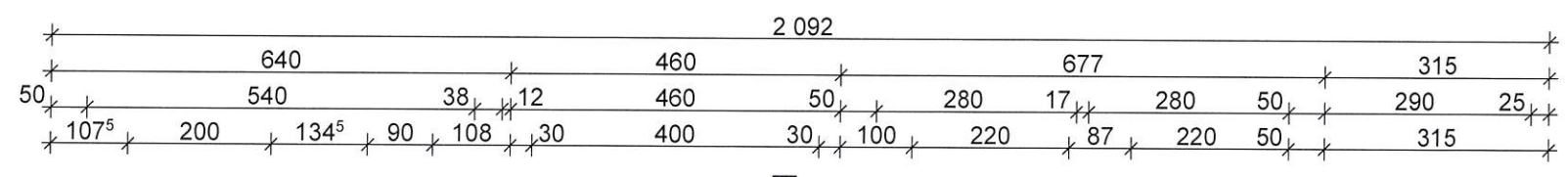
Massstab: 1:100

Datum: 09.08.2018

123 - #LayIDNr

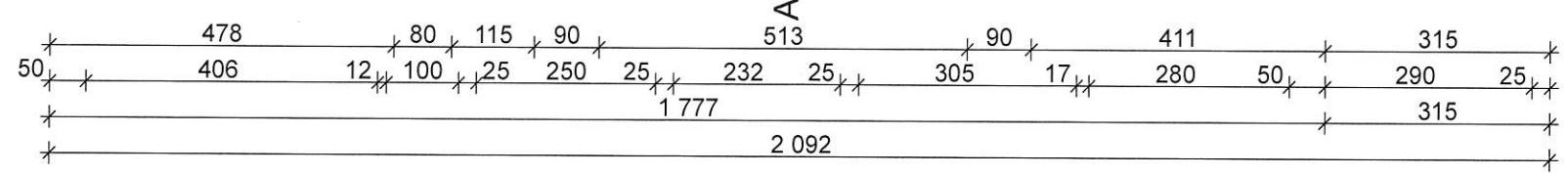
PlanNr.

West1 ▼



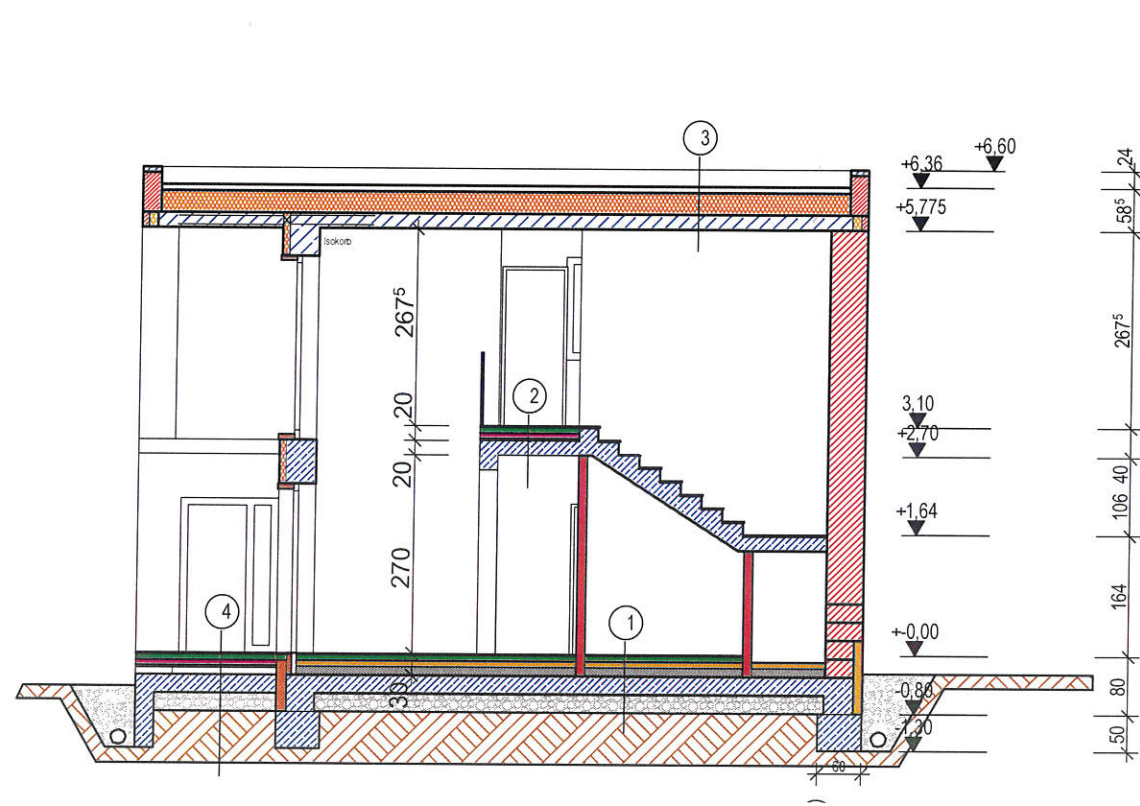
West

West2



West3 ▲

Obergeschoss 1:100



Schnitt 1:100

3  
Kies 8cm  
EPS W 30 35-25cm  
PEA-Folie  
Stb-Decke 22cm

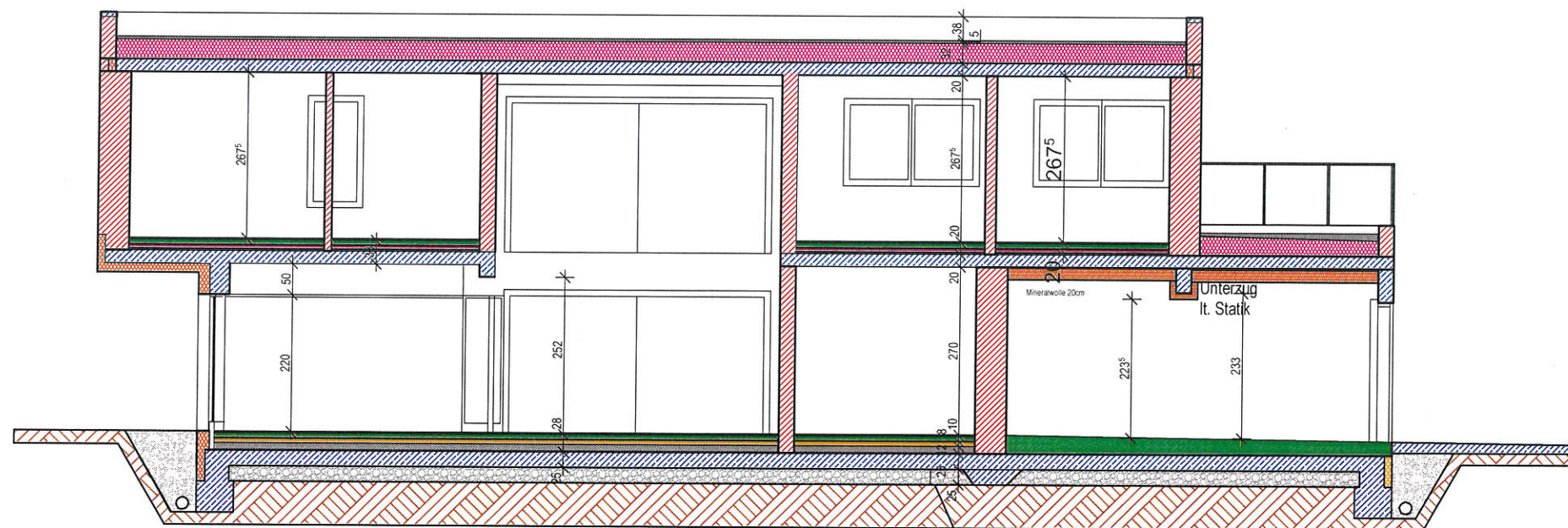
4  
Fliesen 3cm  
Einkornbeton 8cm  
PEA-Folie  
Stb-Decke 22cm im Gefälle

2  
Parkett 2cm  
Estrich 8cm  
PEA-Folie  
Trittschalldämmung 4cm  
Styropor-Schüttung 6cm  
Stb-Decke 20cm

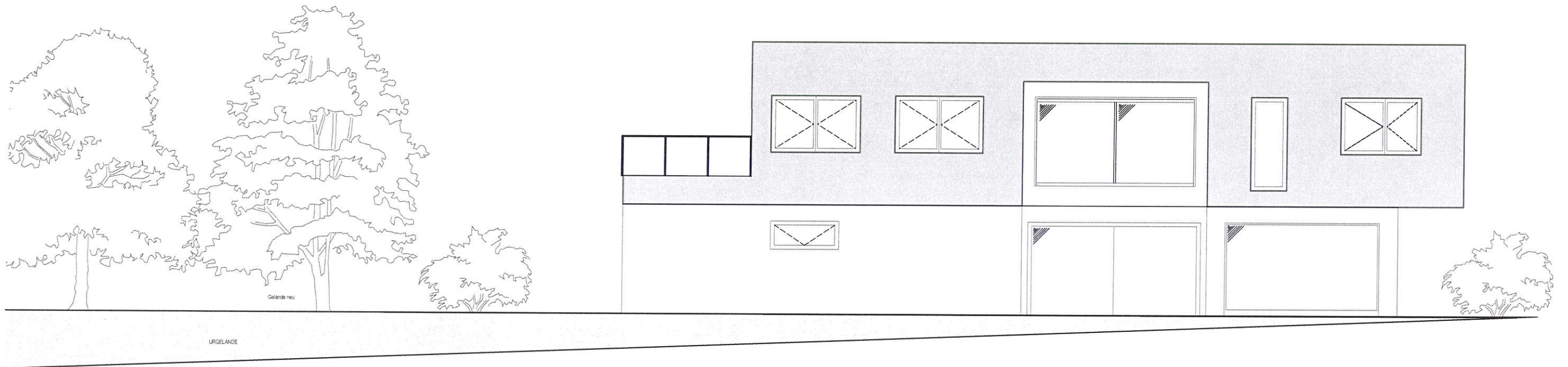
5  
Estrich Beschichtet 20-8cm  
PEA-Folie  
Stb-Bodenplatte 25cm

1  
Parkett 2cm  
Estrich 8cm  
PEA-Folie  
Trittschalldämmung 12cm  
Styropor-Schüttung 8cm  
Bodenplatte 25cm  
Rollierung 16/32 25 cm

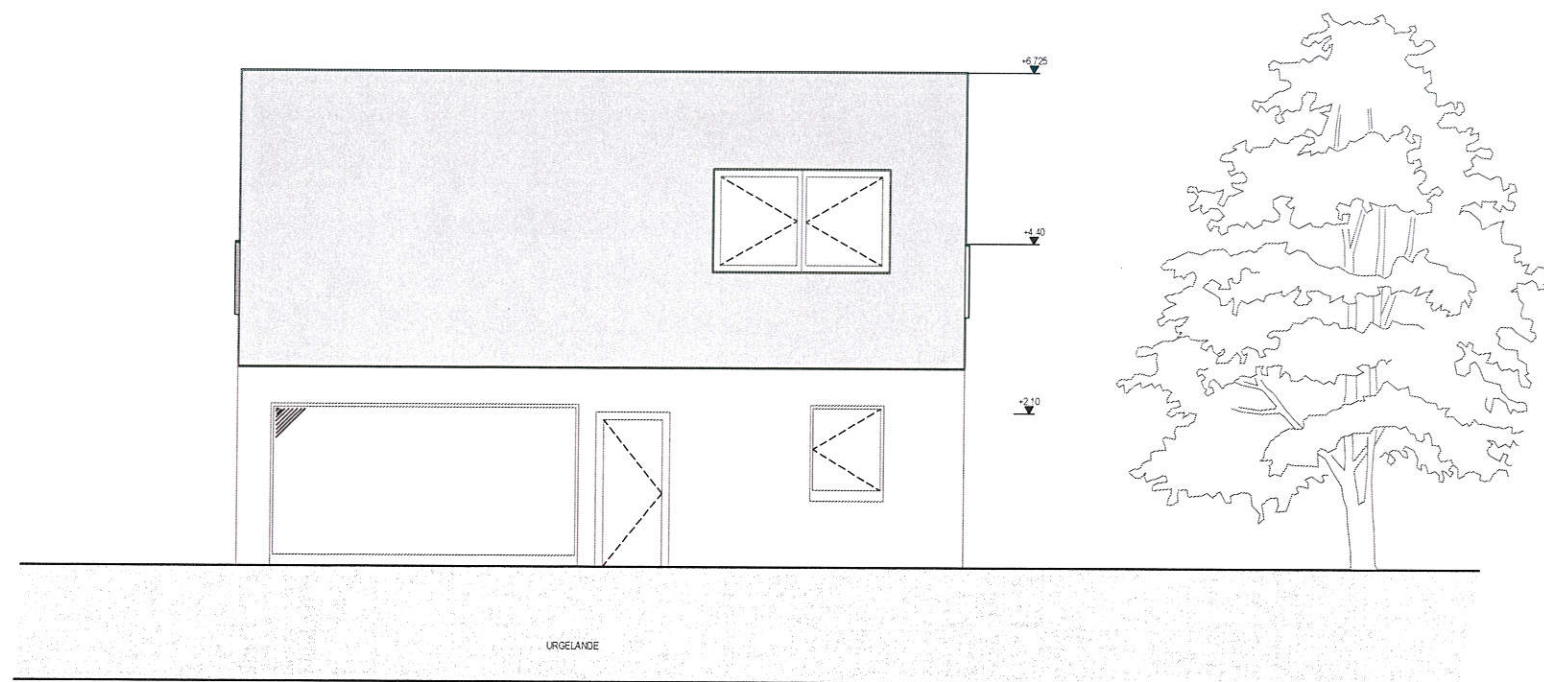
4  
Fliesen 3cm  
Einkornbeton 8cm  
PEA-Folie  
Stb-Decke 22cm im Gefälle

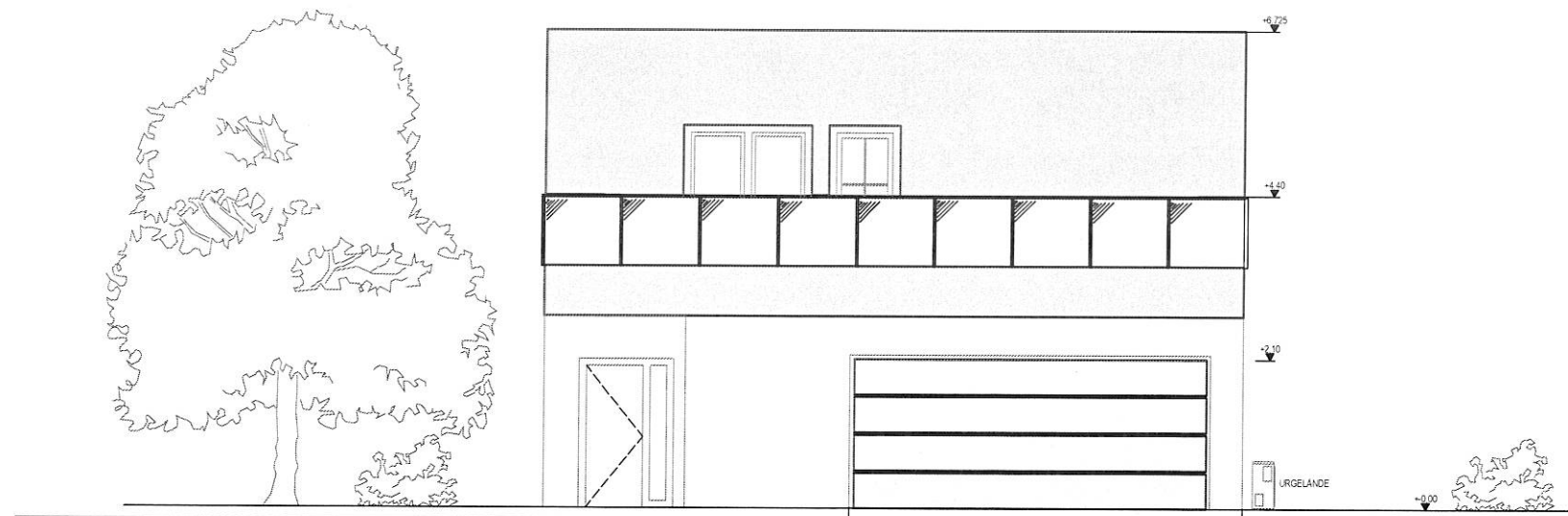
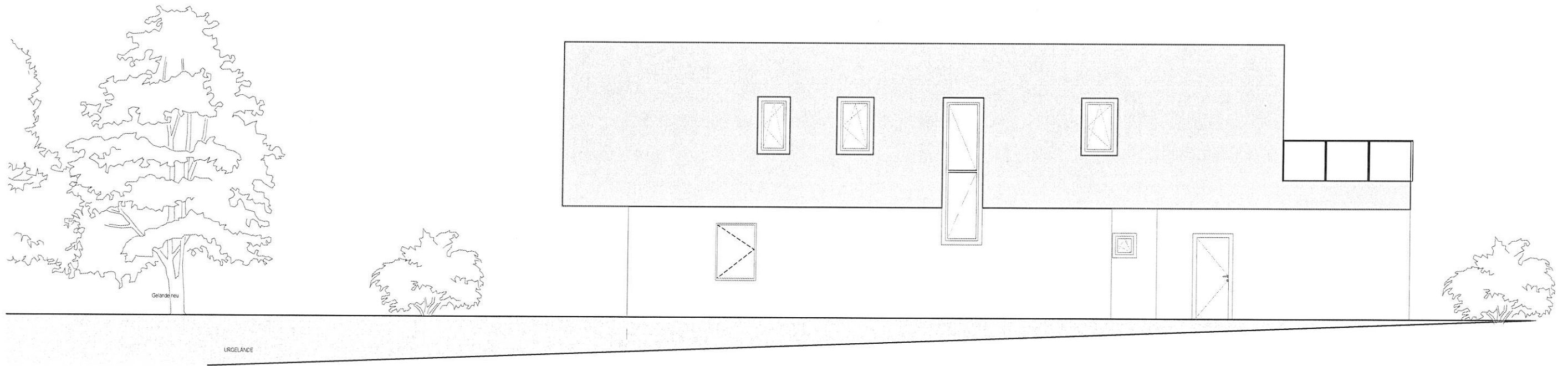


Schnitt 1:100



# Ansichten 1:100



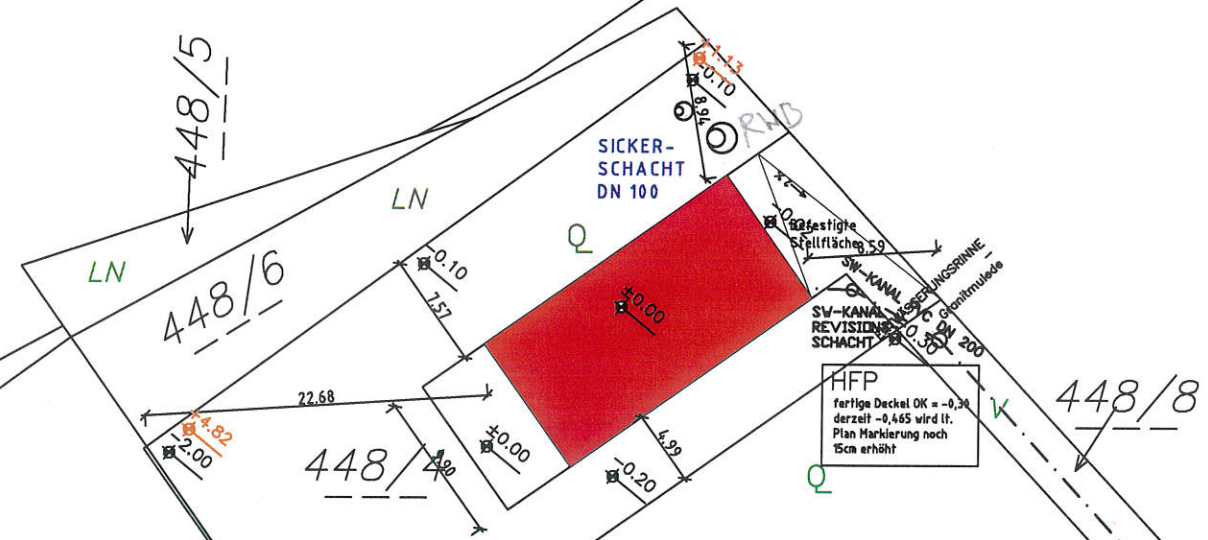


Ansichten 1:100

# LAGEPLAN 1 : 500

■ Gelände alt

447



448/1

448/2

448/6

448/4

448/7

448/8

