

Wohnnutzfläche für Haus

26.03.2013

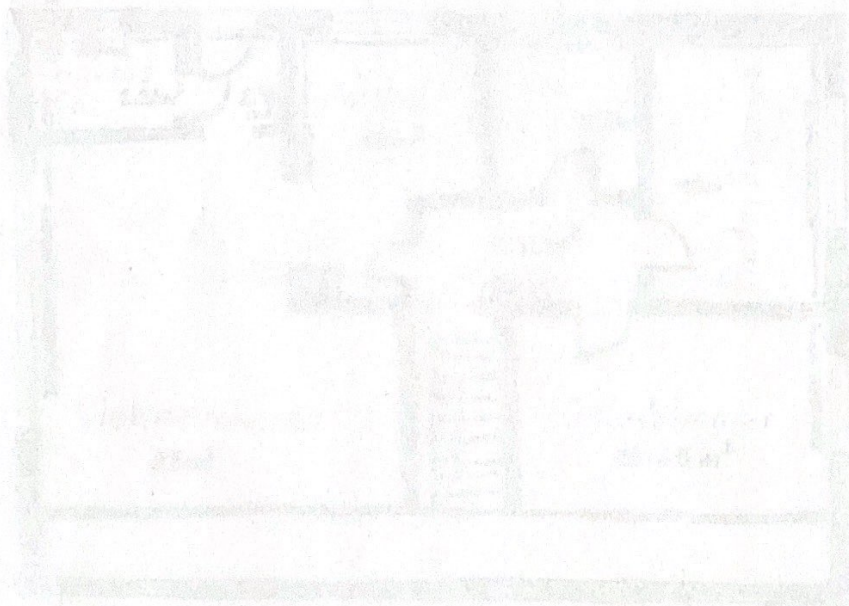
Angaben inklusive aller Vorräume und Abstellräume:

Keller ebenerdig, Erdgeschoss 65,49 m

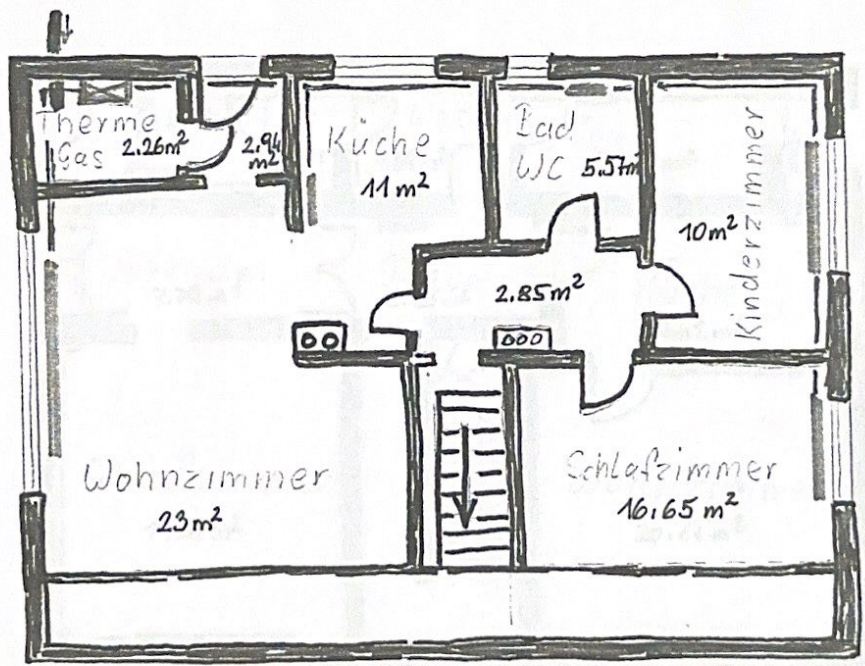
Untergeschoss, 1. Stock 80,37 m




Obergeschoss, Mansarde 74,27 m

Gesamtwohnfläche: 220,13 m



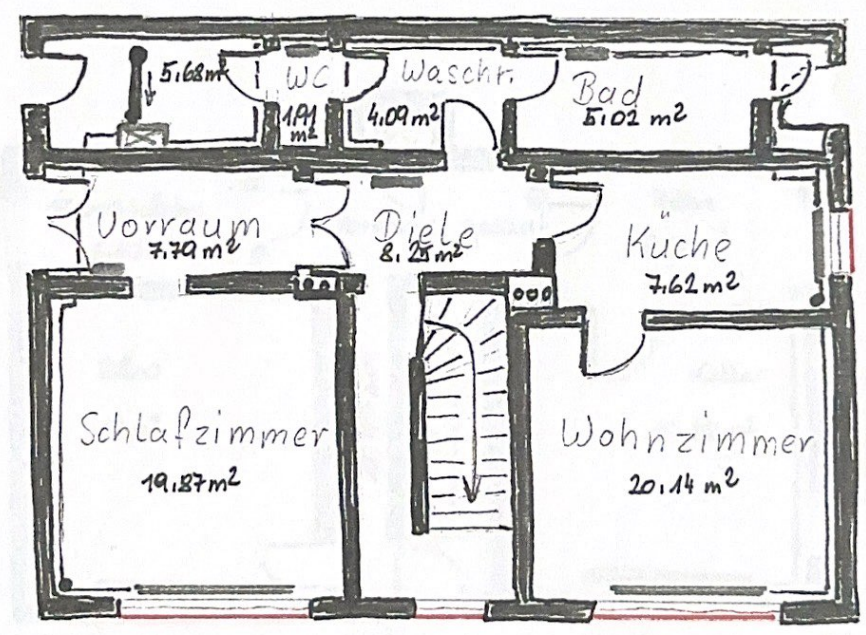
Obergeschoss ▽ 74.27m<sup>2</sup>  
(Mansarde)



-  Heizkörper
-  Leitung
-  Therme ~ Gas



Untergeschoss: 80.37m<sup>2</sup>  
(1. Stock)



— Heizkörper

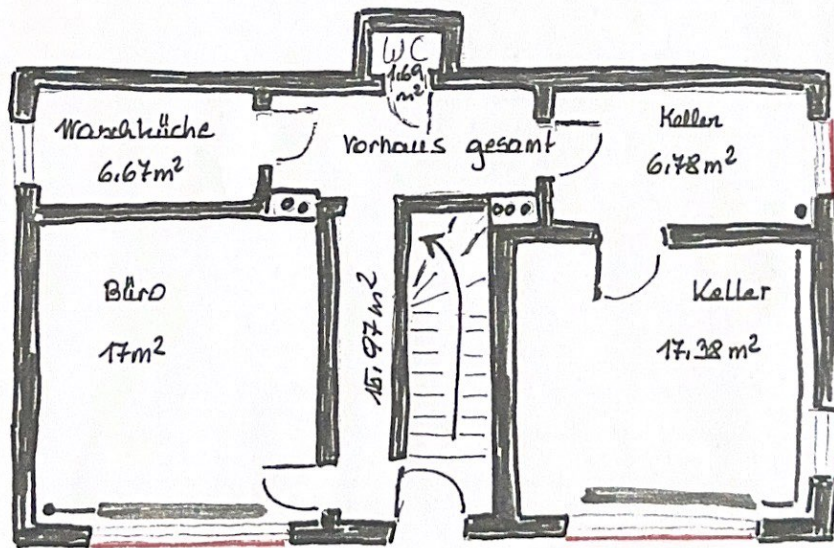
— Leitung




⊠ Therme

— neue Fenster

3

Keller? 65.49 m<sup>2</sup>  
(Erdgeschoss)



-  Heizkörper
-  Leitung
-  neue Fenster